



Omarama Gazette

March 2022

The Noticeboard

To have your community notice included here
email: omaramagazette@gmail.com

Very happy belated birthdays to Lex Perriam, Malcolm Cameron and Blair Shaw - our February birthday boys!!

And very happy March birthdays to Ross Tangey (65) and Shona Smith (70).
(see photos over by Julie Dyson and Ruth Grundy)

A special milestone birthday - 80 years - was celebrated by our gentle matriarch of Ōhau (see over).

Congratulations to Upper Waitaki Young Farmer Club member Tom Adkins, 23, who has won the Aorangi regional final and will go on to compete in the FMG Young Farmer of the Year Grand Final. Tom is a block manager on Caberfeidh Station.

Our sincere condolences to family and friends of Kathleen Sutherland, formerly of Benmore Station.

Our condolences to family and friends of Dr Joe Chambers, of Kurow. Our respected Upper Waitaki GP for many years.

The Upper Waitaki Returned and Services Association will hold its annual meeting at 2pm, Saturday, March 19, at the Back Bar of the Kurow Hotel. Contact Karen Hofman 027 208 2669

Kurow Medical Centre Ōmārama Clinic at the Ōmārama Community Centre, is open Thursdays, 8.30am to 12.30pm. To make appointments for all clinics, order repeat scripts or make enquiries please contact Kurow Medical Centre 03 436 0760 (Monday to Thursdays). www.kurowmedicalcentre.org.nz

The Ōmārama Community Library is open 9.30am to 11am, Wednesdays and Saturdays. Library hours can change. Contact Yvonne: 027 476 7473.

St Thomas' Ōmārama Church Community:

chairperson: Ven Dr Michael Godfrey, phone 022 342 9977 or email Dylanfreak@gmail.com; committee secretary (Presbyterian): Rev Lee Kearon, phone: 021 250 1060 or email: lee.kearon@gmail.com

- continued over

The Noticeboard, continued

The Ōmārama Golf Club Saturdays cards in 12.30pm, tee-off 1pm. Club captain James Moynihan phone: 027 215 8266; email jwmoynihn@yahoo.co.nz www.omaramagolfclub.co.nz

The Upper Waitaki Young Farmers Club meets at 7.30pm on the first Monday of each month at the 'Top Pub' - the Blue and Gold pub, in Kurow. All welcome. Join the Facebook group.

Ōmārama Playgroup meets at 9.30am each Wednesday during the primary school term at the Ōmārama Community Centre. For more information phone president Tarryn Benton 027 201 7065 or secretary Aimee Snelgrove 022 350 5536 aimeesnelgrove@hotmail.com

Bridge Club - The Ōmārama Bridge Club meets on a regular basis and would welcome new members. If you are interested please phone Sylvia Anderson 438 9784 or Ann Patterson 438 9493.

The Ōmārama Model Aircraft Club meets on Saturdays from 9.00 am to 12.00 noon at its flying ground at the Ōmārama airfield. All welcome - Contact Don Selbie on 027 435 5516.

FENZ Ōmārama Volunteer Fire Brigade meets 7pm each Wednesday and has its meeting at 7:30pm on the third Wednesday of the month. New members welcome.

A gentle exercises and social afternoon group meets at the Otematata District Club at 1.30pm Thursday afternoons. Gold coin donation and a cuppa after the exercises.

Learn to play Bridge Otematata, 7pm Thursdays at the Otematata District Club. We have several persons learning at the present time. people can just sit in and watch to begin with if they prefer. Contact Ethel Gray 03 438 7764 or just arrive. Non members of the club will need to be signed in by an existing member.

Plunket Line: 0800 933 922

Ōmārama Plunket Committee: phone Petrina Paton 027 345 6192



Many Happy Returns to all



Many Happy Returns to Rae Spiers, of Lake Ōhau Alpine Village, who turned 80 last month. Photo: Louis Campbell, The Village Collie



Sophie's choice - food for thought

By Ruth Grundy

Sometimes it can really spark the imagination to see ourselves as others see us.

Back in 2009 a young Sophie Gilchrist had Ōmārama on her mind. Into the fourth and final year of her Bachelor of Landscape Architecture (Hons) degree at Lincoln University the townscape of Ōmārama was front and centre of her thoughts.

Her task for her final year was to complete a major design project to demonstrate she had grasped all the skills taught to her throughout the course and show she was ready to move on out into the world of landscape architecture.

Sophie, who grew up in Otematata, chose Ōmārama as her final design study. The tutor urged the students to choose a place they knew well which might have a “number of issues or challenges” ahead of it as it grew in size.

The final concept was just that, broad-brush in scope, ideas to inspire, she said. Quite by chance the design work has found its way back to Ōmārama – but she is happy for it to be published as a “good way to spark people’s ideas” and encourage people to “think a little more big picture”.

Back in 2009 in the course of her work, she received input from Waitaki District Council planners, including then planning manager David Campbell, who has



recently returned to the council as heritage and planning manager. Much of the task involved looking at the “planning level challenges” of the concept, she said.

She remembers the key to the plan was to work through the issue of the two state highways running through town, to create a town centre that was pedestrian and people friendly but “not be a hassle for vehicles to get through”; to make it more of a “stopping point”.

It was about creating a “gateway” – “to create a location that will become a base for exploration...to make Omarama a memorable part of the journey for all those who pass”.

“I think that’s one of the biggest challenges that plenty of small towns around the country have to deal with.”

The project earned her an A- grade.
Sophie, who has since married, is now Sophie Strachan and lives in Christchurch.

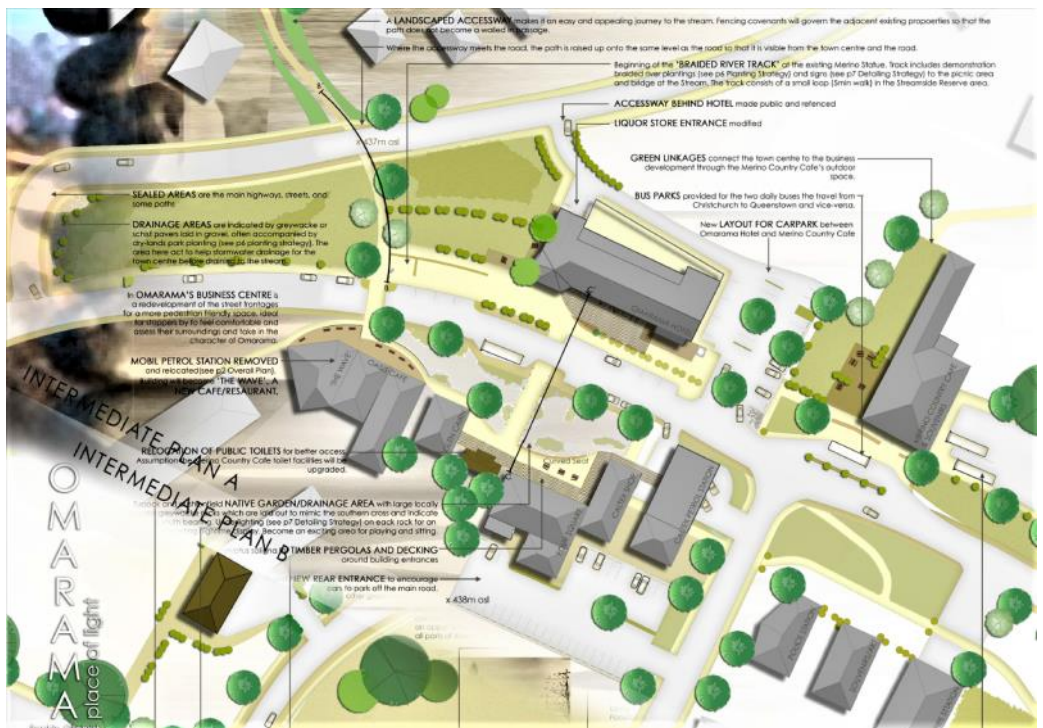
She is still a regular visitor to Otematata and much of her time away from the office is spent as a rowing coach.

Sophie became involved in rowing at school when she was at Craighead Diocesan in Timaru, where she later became involved as a coach.

This year she is coaching Rangiora Girls School having coached Christchurch Boys High since 2018 and will be spending the next few weekends in Twizel.

Sophie still works as a commercial landscape architect in contract/consultancy-type roles which has involved varying work .

Full size views of Sophies work are on display at the Omarama Community Centre



Sophie's choice, continued

Previous pages:

*Cropped in view of how Ōmārama's town centre could look taken from concept design plans by landscape architect Sophie Strachan née Gilchrist
Green spaces are a focus of the town centre.*

Below:

Key to the design is a round-about a new junction point where the two state highways could meet.

To see the full size graphics and design concept, in particular the detail which was difficult to reproduce check out these links:

<https://livingheritage.lincoln.ac.nz/nodes/view/34708>

<https://livingheritage.lincoln.ac.nz/nodes/view/34709>

Overleaf: the concepts behind the plans.

Full size views of Sophies work are on display at the Omarama Community Centre



OMARAMA

place of light

Sophie Gilmartin
1067222

1 of 7

No scale

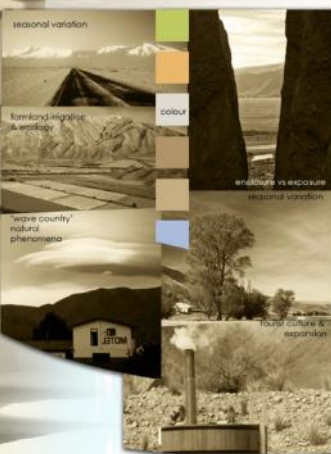
SITE IN CONTEXT

EXPANSIVENESS
& vantage points

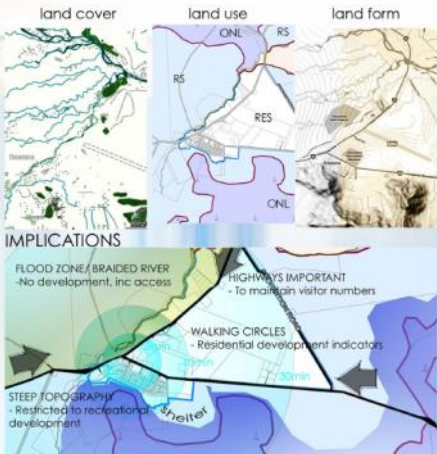
DRAMA
& juxtaposition

CLARITY
& access

OPPORTUNITIES



CONSTRAINTS



PROGRAMMATIC ELEMENTS

1. Streamside walkway and streamside recreation reserve. Clear access and exposure to the landscape.
2. Town junction remodelling and business development. Emphasis on drama of surroundings and clarity of town identity.
3. Omarama Domain/Recreation Reserve for better green linkage accessibility and a place of social interaction.
4. Airfield upgrade for clearer access and accommodation of visiting population.
6. Residential development with expansive views on hillside.
5. Hilltop lookout and drylands park walkway. A vantage point for the expansive views and a broader understanding of the basin environment.



OMARAMA

Place of light

Sophie Granger
10/2/2022

2 of 7

N

1:2500

OVERALL PLAN

SPATIAL CHARACTER

The spatial character expressed in the Overall plan aims to draw on the quality of clarity, I have designed the site to ensure clear accessibility and ease of use while providing convenient vantage points for both sight seeing and for general use by the community. The nature of the surrounding landscape provides me with the background for a systematic and logical town development which needs to be modelled in relation to the scale of the population (231 residents). This design is an exploration of landscape as a commentary on design of spaces for small rural towns affected by tourism.

LAND USE AND ACTIVITY PATTERNS

The activities in Omarama are focused around sustaining the community and providing for holiday makers and tourists who pass through the town. My design relies heavily on the State Highways to bring life to the township. My approach to the better integration of tourism and the local community was with the main aim of achieving clarity for the identity of Omarama, the use of spaces divided into shared and private so that the community has spaces that are available to visitors also, but are spaces that they can take ownership of. The type of development is balanced between residential and business zoning. (mainly B3).

STRUCTURES AND FACILITIES

New structures and facilities to be noted are the swimming pool and gym complex in the Domain, the information centre at edge of the domain residential and business areas, located at the new roundabout. An upgrade to both the Airfield visitor facilities and the Public toilet in the town centre is also included.

PLANTING CHARACTER

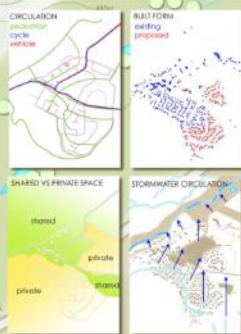
The planting will be mainly native dry-land planting and tussocklands to encourage the establishment of a long-term native high-country ecological patch. This planting character is an embodiment of the current nature of Omarama's surroundings; a nature that needs to be woven in to the township itself. Dry air and clear hot sites in the sees air climate make this planting perfect for this type of planting.

PHASING/STAGING

The development of business, residential and landscape modifications would be suited well to a staged development as the population growth to 480 residents is to occur over the next 30 years. The first stage would be to implement the reconfiguration of SH5 and restructure the town centre. With the redevelopment and densification of this area a better control of tourism business would result. Domain development and housing would be progressive, as would the development of new businesses with the increase in population.

LEGEND

- new buildings
- existing buildings
- willows (existing)
- totara & beech planting



Workway through the proposed River Recovery site to golf course, facing west.

Down to entrance sign on SH5, looking west (SH5 town).

OMARAMA HILL willows walkway connection with stormwater walkway, and proposed park walkway, leading to the Domain. (see schematic diagram for circulation).

NEW RODEO ARENA to move the Omarama rodeo event from San Onofre to the new site. The new location is within 15 minutes walking distance of the town centre. South of around the area needed for the new aspect and other facilities.

DRYLANDS PARK WALKWAY (see planting strategy).

RESIDENTIAL DEVELOPMENT (see cross section below).

GREEN LINKAGES and cycle paths in the landscape, local access to town and to the river, riverbank and watercourse drainage.

NARROWING OF STATE HIGHWAYS to calm traffic and include cycleways and footpaths. Road width will change from 12m to 10m (including cycleway).

OTHER EXISTING ROADS to be widened to 10m to provide better access to the Community Hall & facilities. Upgrade to the Community Hall & facilities, with new access and parking extended.

OLD STOCKYARDS and new parking spaces and ponds for stock during rodeo event.

EXTENSION OF EXISTING RECREATION RESERVE TO BECOME THE OMARAMA DOMAIN. New facilities include: Cricket grounds, Leisure, School & grounds, Post/Opn complex, Rugby/tennis grounds & clubrooms, Netball/tennis courts, Tennis park, Water tower, Basketballing hall, Bridge, Upgrade to the Community Hall & facilities, with new access and parking extended.

RELOCATION OF MOBILE PETROLEUM for better access and share of customers with the coffee station on the main street (SH5).

AIRFIELD ENTRANCE DRIVE modification and parking area, to be extended.

REORGANISATION OF THE TOWN to create a clear path for tourists into the heart of the town and allow on the path for trucks.

SCENIC BOARDWALK access through the PFR demonstration site and alongside reserve to golf club and other walking/cycling tracks. Project River Recovery is a DOC project aiming to help the recovery of kaka and tui in forested reserves.

TOWN ENTRANCE SIGN (see Design detail p7).

FUTURE EXTENSION OF BUSINESS DEVELOPMENT (B3). Type of development would be similar to the Wairaki town. Cote, for example, a sign for the City Citi Wines and demonstration view.

RELOCATION OF MOBILE PETROLEUM for better access and share of customers with the coffee station on the main street (SH5).

RELOCATION OF MOBILE PETROLEUM for better access and share of customers with the coffee station on the main street (SH5).

RELOCATION OF MOBILE PETROLEUM for better access and share of customers with the coffee station on the main street (SH5).

RELOCATION OF MOBILE PETROLEUM for better access and share of customers with the coffee station on the main street (SH5).

RELOCATION OF MOBILE PETROLEUM for better access and share of customers with the coffee station on the main street (SH5).

RELOCATION OF MOBILE PETROLEUM for better access and share of customers with the coffee station on the main street (SH5).

RELOCATION OF MOBILE PETROLEUM for better access and share of customers with the coffee station on the main street (SH5).

RELOCATION OF MOBILE PETROLEUM for better access and share of customers with the coffee station on the main street (SH5).

RELOCATION OF MOBILE PETROLEUM for better access and share of customers with the coffee station on the main street (SH5).

RELOCATION OF MOBILE PETROLEUM for better access and share of customers with the coffee station on the main street (SH5).



OMARA place of light

Sophie Glavin
10/05/2019
5 of 7
N
1:100

SITE DESIGN

The 1:100 Site Design is focused in the Streamside Reserve area and consists of a modification of the existing footbridge and development of a functional and expressive outdoor space which brings out the best of the stream and surrounding landscape.

The main quality that will be revealed is expansiveness through a dramatic entry to the space. The design will be a fusion of planting and hardscape strategies with my design inspiration to become an appropriate and well resolved space that both locals and visitors can enjoy.



Note: 10.0m datum is measured from an existing rock at the waters edge. The actual height in metres above sea level at this point is approximately 433, but 10.0 has been used for ease of reading.

CROSS SECTION D-D' Through seat, deck, bridge and rocks (facing west)

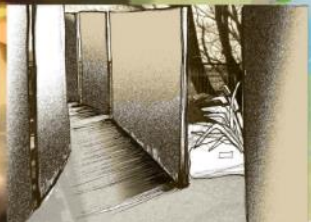
- PATH CONNECTION with Clay City MTR track and the existing unsealed track to the Omarama Golf Course.
- STRUCTURAL GABIONS can be used as both retaining and seating. The gabions will be filled with locally sourced gravel and soil rocks.
- WHEELCHAIR ACCESS ramp allows for anyone and everyone to pass through the site. Slope is 1:12 and also has a handrail.
- PLANTED BERM with mainly kowhai and customised planting (see PLANTING STRATEGY)

- DECKS are constructed with sustainable Eucalyptus radiata and will have a weatherboard that will board up the back planting and dry and feet of the plants.
- A VARIETY OF SPACES are created along the bridge with the intent.
- LARGE GREYWACKE STONES become natural seats and sunbathing rocks beside the water and sitting in the water.
- An EXTENDED PLATFORM on the bridge allows observation of the water from above.

- EXISTING FENCELINES are offered to include openings for access to the waters edge.
- WALKING TRACKS and other paths extend off of this main track. It's a place for exploration.
- CORTEN STEEL "WALLS" (2m high) channel people onto the bridge, much like a steep through a gap.
- Approach to stream through old existing yellow trees (greys) shaped light across the COMPACTED GREYWACKE CHIP PATH. Path is raised slightly (approx 200mm) above ground level of planted areas to reduce the risk of flooding.
- NEW AREAS OF PLANTING enhances the ecological integrity of the Streamside Reserve while providing and industrial opportunity for both tourists and locals (see PLANTING STRATEGY).
- BREAKS IN THE VEGETATION act as grassed paths that emerge into small clearings in the willows, ideal picnic spots.

EXISTING FOOTBRIDGE over a small open drainage stream.

CROSS SECTION E-E' Through decks bridge and path (facing north-east)



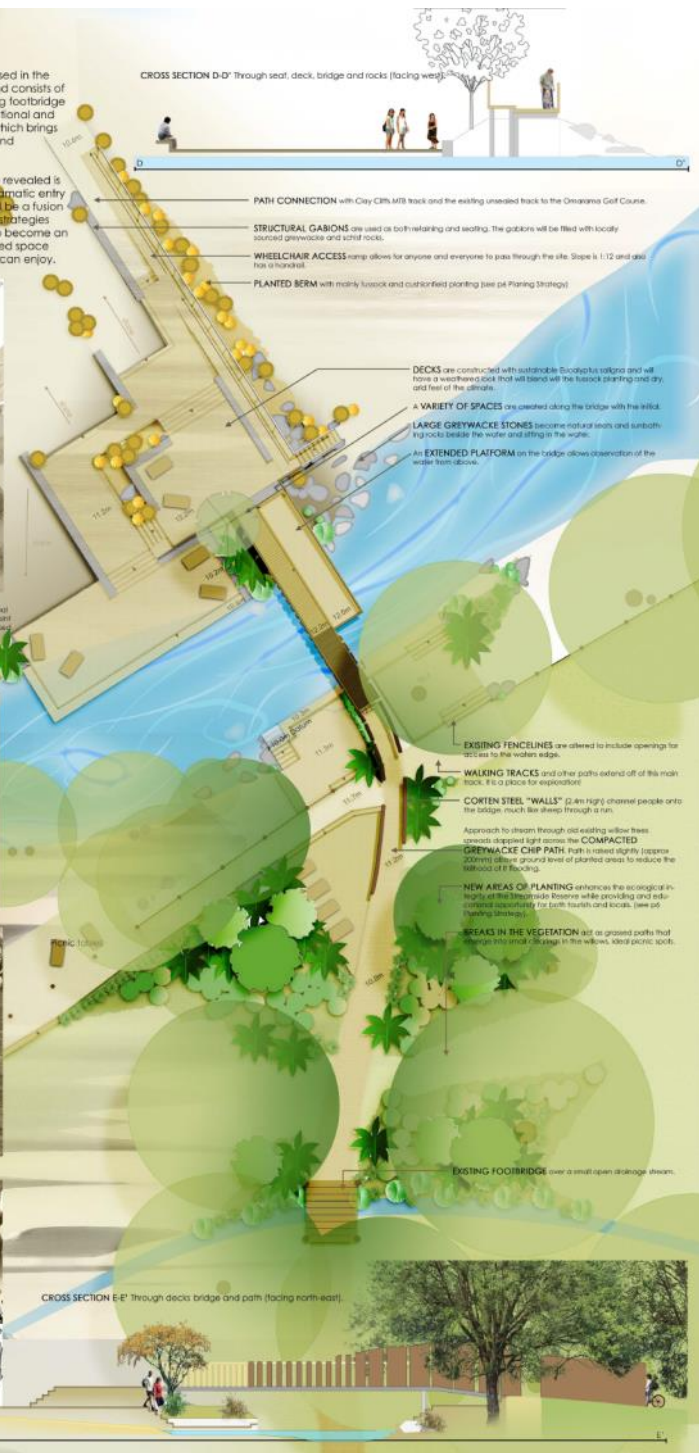
Deck into footbridge (facing west)



Rock to sit on each side of stream (facing south-west)



Walkway to bridge (facing west)



ICYMI - ECan land, discussions continue

This story is brought to you by; the anonymous resident who posted the sign below (the old fashioned way), our roving reporter Michelle Kitchen, and with the assistance of Ahuriri Community Board chairperson Vicky Munro and several others!

Last month, Environment Canterbury councillor Peter Scott met with the Omarama Residents' Association to discuss the status of the parcel of land – the old Rabbit Board Land - and houses that ECan has been maintaining on behalf of LINZ. (See minutes of the meeting below)

Fenz Omarama Volunteer Fire Brigade chief Greg Harper said Fenz had also raised concerns with ECan (*see Greg's report over*).

The Residents' Association had written to ECan in December to ask for answers.

ECan replied via Facebook that it had begun a new maintenance contract for these properties to ensure they are well-kept.

Some were tenanted, and some were used by field staff on occasion, instead of using motels, it said in it's Facebook post.

"The reason why there hasn't been any major upgrades or development is that Environment Canterbury has instigated the process to dispose of this land, which will involve a report from to the Commissioner of Crown Lands and right of refusal to Te Rūnanga o Ngāi Tahu."

Vicky referred the matter to Peter.

Cr Scott said it was his understanding ECan had no further use for the land and he would follow up the two issues; future maintenance and land ownership, and report back to the next meeting of the Residents' Association.

A NEW APPROACH PROPOSED RE LAND DISPOSAL,



Here is the background to Peter's visit, published on the Omarama Gazette Facebook page, February 11, 2022, in response to issues raised by Michelle Kitchen and the anonymous signwriter!

A NEW APPROACH PROPOSED RE LAND DISPOSAL,

Maintenance issue also addressed

The posts on the Omarama Gazette Facebook page regarding ownership and maintenance of the property in central Omarama have motivated some new action. Environment Canterbury's South Canterbury councillor Peter Scott contacted the Omarama Gazette this morning with this message.

He would like the community to know that he is most unhappy about the situation and has spoken to - Toitū Te Whenua Land Information New Zealand- who are charged with actioning the disposal of the properties about the matter "a number of times". He is following up the maintenance issue to ensure it is being addressed. Plus, he has sent the following email, which he has allowed me share, to: ECan Councillor John Sunckell, who is the ECan Audit, Finance and Risk Committee chairperson. (This committee deals with property.); ECan chairperson Jenny Hughey; Waitaki District councillor Bill Kingan, who is the WDC Assets Committee chairperson and interim Ahuriri Ward co-councillor; and Ahuriri Community Board chairperson Vicky Munro, among others.

The text is below;

"Subject: Omarama Properties

Mōrena John

As discussed with you I have been contacted by Vicky Munro (Cc) regarding the ex rabbiters accommodation in Omarama.

The issue about their future has been previously discussed with Miles McConway [former Ecan director of finance and corporate services], and Bronwyn Simmonds [ECan asset services manager].

The properties are legacy properties from the changes made when Regional Councils were established.

ECan has no further use for these properties and so their future sits with LINZ.

I have had a similar discussion about a property at St Andrews that is bare land.

LINZ have to my knowledge yet to respond to ECan about the future of these properties.

The Omarama properties are within the village and are in a sad state. FENZ (neighbour) are concerned about fire risk as the properties are untended and a fire risk. The grass has since been trimmed and some risk lessened.

I would hold out little hope of any speedy response to this issue as any process with LINZ is glacial in movement.

My suggestion would be to put a proposal to LINZ that the properties be put in the care of Waitaki District Council and or the local community board.

I have spoken the local Waitaki Councillor Bill Kingan and he is happy.

My suggestion is that you take this forward as Chair of PARC and see if we can gain some resolution.

These properties are not ours to sell but could we on lease them.

Could LINZ allow a 50 year lease to the community,

Other opportunities ??

Regards, Peter Scott."

Peter said people are welcome to contact him:

Councillor.Scott@ecan.govt.nz 027 491 6413

EXPRESSIONS OF INTEREST

Gaining expressions of interest for boot camp sessions and other fitness classes of 45 minutes in the community hall.

These sessions are for all levels of fitness!

At this stage, it is to be confirmed of exact days and times, but will be a range of mornings, day times and evenings.

Please email me, if you're interested, and your preferable times/days.

Once I've had some interest, I will put together a timetable and more details of what the classes look like.

These will begin, end of March/ early April.

email: lm.mccormick92@outlook.com

Looking forward to hearing from you!

Lauren

SOCCER REGISTRATIONS

Time to start thinking about winter sports.

Soccer is a great team sport for kids and your local club is Riverside Football providing teams for kids aged 4yrs to 13yrs from Twizel to Papakaio.

Information about registration day will be coming soon and posted on the RFC FB page (link below) head on over and like and keep informed about Soccer for the Waitaki Valley. <https://www.facebook.com/groups/1609805512616065>

OPPORTUNITY IN OTEMATATA

The Otematata Sports Club is looking for a person/people to help volunteer to run the community gym. Duties include signing up new clients, re-signing existing clients, and cleaning of the gym area. A full gym membership will be thrown in for the right person. There is also an opportunity for this person to set them selves up as a PT and run fitness classes. Contact Nick Chapman 021 355 681

kiwijoe63@gmail.com

**The April issue of the
Omarama Gazette
is Wednesday, April 6, 2022**

**Please submit copy
by Thursday, March 31, 2022**

Omarama junior tennis - in the news

Last week's Oamaru Mail captured all the action at the North Otago Tennis junior Town vs Country tournament in Oamaru.

Omarama coach Becky Martin said, for our young tennis stars it was their first real match and they did us all proud.

They have all entered into the Oamaru closed champs next weekend - will keep you posted.

Photos: Oamaru Mail, Kayla Hodge



Acing it ... Team Country's Lucy Radford heads back to the baseline to serve.



Aced it . . . Country's Wilfred Morgan won his singles match at the weekend. PHOTOS: KAYLA HODGE



Back and forth . . . Team Country's Hazel Mason returns a shot.

The Community Reports

Ōmārama Volunteer Fire Brigade



Here we are in March already. Time to tick off the pre-winter check list. If not already done get the chimney cleaned. Make sure there is plenty of dry firewood, have a metal container for ashes. If you use an electric blanket please get it checked by an electrician.

Omicron is moving throughout the country at a great pace now. Let's try to keep ourselves as safe as we can. Masks and sanitiser are our primary defence and remember if you are unfortunate enough to need our assistance we will be asking some question around Covid and wearing extra

PPE to protect ourselves before we start assisting any patients.

On a brighter note isn't it great the grass in the land adjacent to the Fire Station has finally had some attention. The squeaky wheel finally got some action. Well done to the Residents' Association. I believe a letter was sent to ECan.

Fenz has also had our risk reduction team dealing with the situation I had a call to check if there had been any action.

Let's look out for each other over the next few months.

The stress will be high for some of us so chat or a phone call may be all that is needed.

Stay Safe

Greg Harper and the team at the Omarama Volunteer Fire Brigade

Greg Harper

Chief Fire Officer

021 293 1171

greg.harper@fireandemergency.nz

Facebook: /Omaramafirebrigade

**'The Community Reports' is
dedicated to news
from clubs, groups and sports teams.
Contributions are welcome.
omaramagazette@gmail.com**

The Ōmārama Shed

The Ōmārama Shed group meets at 10am each Saturday
and at other times, too.

For further information contact: Murray Stuart 027 432 7537



Ōmārama Collie Dog Club

The Omarama Collie Dog Club trials begin on Sunday,
March 6, at its grounds on Dalrachney Station, 2180
Omarama/Tarras Lindis Pass Hwy. They continue Monday,
March 7.

Secretary: Carla Hunter P O Box 53, Omarama 9448;
email: smithyc66@gmail.com

Entries close 10am on the second day.

Boots and Jandals Hotel social club

By Philip Jannink

A great day was had for the annual Boots and Jandals, Omarama Hotel Social Club Spud in a Bucket function.

A special thank you goes to Bruce and Julie and the great team at the Boots and Jandals Omarama Hotel for their great support and assistance throughout the day. Also, to Laurie and Ross for judging the overall winners of the spud in the bucket and to Ricky and Malcolm for taking care of the barbeque duties.

In the child category for most potatoes, Isabella was the winner, Balin second and Paige third

For the adults Jenni was the winner, Malcolm second and Simon third.

Tracy won the prize for the best-looking potatoes and in a very tough category Laurie won the prize for the least potatoes.

And no prizes for Paddy, those little blue pills didn't help with your potato growing.

There was a great turn out and a special thank you to all who attended so a fun filled day was had by all

Photos: Julie Dyson





Ōmārama Community Library

Two urgent requests from our dedicated volunteers

- could you have a check around for any summer reading books that maybe pining for their library home now their borrowers are back at school. There's a few still to be returned after the holiday reading programme.

- **volunteers are needed urgently.** Numbers have dropped again which means our dedicated few do not get necessary time off.

Please consider giving a couple of hours a month to help run this important community asset.

Please contact Georgie 027 486 1525 or Yvonne 027 476 7473

The Ōmārama Community Library
is open 9.30am to 11am,
Wednesdays and Saturdays,
at the Ōmārama Community Centre.
omaramalibrary@gmail.com



Ōmārama Residents' Association

The next meeting of the
Ōmārama Residents' Association is
7.30 pm Thursday, February 17, 2021
at the Ōmārama Community Centre
An invitation is extended to all

Contacts:

Lindsay Purvis, chairperson, 027 438 9630

Yvonne Jones, secretary, 027 476 7473

(Minutes of the previous meetings are available from Yvonne)

THE ASSOCIATION HAS ITS OWN POST OFFICE BOX

Could all those who want to contact the association by mail,
send accounts to be paid,
or have correspondence considered at the monthly meetings
ensure it is addressed to:

The Secretary, P O Box 93, Ōmārama 9448.

The association's email address is omarama.committee@gmail.com

ŌMĀRAMA COMMUNITY CENTRE HALL HIRE

To make a booking for an upcoming event or for more
information about hall hire and availability
please contact Michelle Kitchen 027 280 5446
or email hallhire.omarama@xtra.co.nz



Apply now for Meridian's Power Up Community Fund

At Meridian, we only generate from 100% renewable resources: wind, water and sun. We're committed to doing good things with our energy. That means good for people, and good for the environment.

We're proud to back local projects in the communities around our wind farms and hydro stations with our Power Up fund.

With Power Up, your community has a say on what initiatives we support and fund. Managed by a panel of locals and Meridian staff, we're working together to build strong, sustainable communities.

Power Up Waitaki provides grants for projects in the Waitaki area, including Aoraki Mt Cook, Twizel, Omarama, Otematata, Kurow, Hakataramea, Duntroon, Ikawai, Papakaio and Glenavy.

How to apply

Applications for the next funding round are open until midnight on 24 April 2022.

For more information and to apply:

- visit meridian.co.nz/powerup
- email community.fund@meridianenergy.co.nz
- call 03 357 9732



The Waitaki Newcomers Network

The Waitaki Multicultural Council has established the Waitaki Newcomers Network and Migrant Support Service which are both very successful initiatives. Within the Oamaru area there are many events where people can meet up and establish new friendships which helps them to settle happily into a new community. It can be difficult adjusting to a new place, especially if English is your second language, the culture is new and you have no family in the area. Making friends and learning about the area and what it offers is key to developing a sense of belonging and well being. In rural areas these challenges of isolation can be even greater.

For more information about this group and to subscribe to regular updates

Contact: Christine Dorsey

027 242 8643.

waitaki@newcomers.co.nz

Abacus House,

102 Thames Street,

Oamaru

03 434 7544. www.newcomers.co.nz

Justices of the Peace

JPs are available by appointment to:

- * Witness documents such as applications for citizenship
- * Certify copies
- * Take declarations, affidavits and affirmations

The service is free of charge

To make your visit quick and easy:

- * Do not sign anything beforehand
- * Do take photo identification
- * Remember to take the original as well as the copy to be certified
- * Check that a New Zealand Justice of the Peace can complete your documentation



Georgie Robertson
Omarama
03 438 9554 027 4861525



Vicky Munro
Otematata
03 438 7855 021 438745



Alona Shaw
Omarama
027 773 4214



When circumstances beyond your control lead to a rural business crisis be it financial, climatic or personal the Rural Support Trust is ready to assist. Services are free and confidential.

0800 RURAL HELP (0800 787 254)

Advertising pays for production and distribution.

To find out about publication and close-off dates, and how much it costs to place your advertisement, please phone 021 294 8002, 03 438 9766 or email omaramagazette@gmail.com



Kurow Medical Centre

8 Wynyard St, Kurow
P: 03 4360760 F: 03 4360780

E: info@kurowmedicalcentre.org.nz

W: www.kurowmedicalcentre.org.nz

www.facebook.com/kurowmedicalcentre

**Providing 24/7 health care and support to
the people of the Upper Waitaki and Mackenzie**

**Kurow Medical Centre and its satellite clinic
in Twizel Mackenzie Health Centre and
Outreach Clinic at Omarama Community Hall
are proud to offer our registered and casual patients the following services:**

- * Ultrasound performed by a qualified clinician (great for minor fractures, gall stones, kidney stones, heart and lung problems, foreign bodies, blood clots, detecting early pregnancy and much more!)
- * Minor surgery
- * Vasectomies
- * Mole checks and removal
- * Steroid injections
- * Venesection
- * Aviation, workplace and driving medicals
- * Botox for Wrinkle reduction
- * Workplace health screening
- * Counselling
- * Spirometry to diagnose asthma and COPD
- * Hearing and sight tests for adults and children
- * Ear syringing
- * Liquid nitrogen for warts, verruca's, and skin lesions
- * Cardiovascular risk assessment and diabetic checks (funded for eligible patients)
- * Travel advice and vaccination
- * Cervical smears (funded for eligible patients)
- * Seasonal flu shots and shingles vaccine (funded for eligible patients)
- * Childhood Immunisation
- * Before school checks
- * Postnatal and six-week baby health check

And much more!

**GP consult fees: Under 14yrs Free; Adult \$41.00
Care Plus – Free to eligible patients only**

We also offer the following services from external Health Care Providers:

- *Podiatry and Ear Health (Kurow only)
- *Physiotherapy, Acupuncture and Massage (Kurow and Twizel)

Open

Kurow: Monday to Thursday 8.30am to 5pm. Omarama: Thursday 8.30am to 12.30pm.

Twizel: Monday, Tuesday, Wednesday, Thursday and Friday 8.30am to 5pm and Saturday 9am to 12pm

Please note: We provide 24/7 on call after hours cover by our doctors and PRIME nurses for all our registered and casual patients!

**If you require further information or an appointment, please contact us on:
For Kurow 03 436 0760 or for Twizel 03 976 0503 - Dr Tim and Juliet Gardner**

Look us up on our website or Facebook page for more information.

Announcement from
KUROW MEDICAL CENTRE
and MACKENZIE HEALTH CENTRE

COVID-19:

We understand this is a very difficult and stressful time for the community and wish you all a very safe journey through the next phase of the COVID outbreak. We will do our utmost to ensure all our patients continue to get 24/7 access to good quality healthcare and are just a phone call away.

We are providing Rapid Antigen Tests to anyone with **cold or flu symptoms, incl fever, headaches or diarrhoea**, and to a close household contact at day three and day 10 from exposure to an infected household member.

Covid Boosters and Children over 5 years requiring their COVID shots can get theirs on our COVID clinic days during Tuesdays and Fridays in Kurow. Mondays, Thursdays, and Saturdays in Twizel and Thursday mornings in Omarama.

Please call reception on 03 436 0760 or 03 976 0503 to book in for a swab or COVID shot with the Nurse.

In order for us to continue protecting you all and our clinical staff please

DO NOT ENTER THE CLINICS IF YOU HAVE ANY OF THE ABOVE SYMPTOMS!

Please call the above number to inform the reception so that you can be seen either in your car or in our Red stream rooms situated outside the clinics.

STAFFING:

On a good note we are extremely fortunate to announce the engagement of Dr Steve Bannister who is working at our Twizel clinic on Mondays, Tuesday mornings and Wednesday afternoons.

Dr Natasha Sharp will be back in Twizel in the next two weeks and working Wednesday mornings. She will continue to work at our Kurow clinic on Mondays, Wednesday afternoons and Thursdays.

Dr Tim will continue to work Tuesdays and Wednesdays in Kurow, Thursday mornings in Omarama, Twizel afternoons, all day Fridays and Saturdays.

Yours in Health

Juliet and Tim Gardner

Here's an brief update on the work of the Community Care Group

Last week, Hana Halalele, one of our Waitaki 'community connectors', dropped off a range of personal hygiene gear including masks for us to hand out as required, with a lovely thank you card. (See photo).

We plan to distribute this gear to our volunteers as and when required, especially for those working in the kitchen, plus it will be popped into the care packs which we deliver to households affected by isolation rules.

We are also to be sent some rapid antigen tests - we'll update you further about this process when these arrive.

Fingers crossed things stay quiet on the Covid front - but for now, at least, we are as ready as we can be.

Thank you to all for the thought you have put into this and all the work behind the scenes.

Our volunteers are here to help - just give anyone of us a call.

If you must self-isolate and there's a few things you've not had a chance to do or get in, or you need to put your mind at rest over something, please feel free to call any of the numbers listed above.

We're a bunch of volunteers able to help with most things.

BUT we will not approach you unless invited to by yourself or a friend.

And your privacy and confidentiality will be respected.

☐ **Keeping connected** - keeping in touch and getting the info
Ruth Grundy, ruthgrundy@gmail.com 021 294 8002
Adrienne Harper, adrienneharper@gmail.com 021 139 2817

☐ **'Meals on wheels' and deliveries**
Carolynne Grant, kevingrant@xtra.co.nz 03 438 9742 and leave a message.
Georgie Robertson, huntly@xtra.co.nz 027 486 1525

☐ **Rural tasks (complementing the work of the Rural Support Trust)**
Annabelle and Richard Subtil; subtil@omaramastation.co.nz
Annabelle 027 406 9522, Richard 027 208 9096

☐ **Taking care of visitors and hospitality industry advice**
(If you are accommodating guests in any way eg airbnb and have questions, give Megan a call) Megan Talarico, gm@heritagegateway.co.nz 021 545 566

☐ **Drop-offs and deliveries (other than meals above)**
Alona Shaw, Alona.Shaw@foursquare-si.co.nz 027 773 4214

☐ **Pets and plants and necessary chores.**
Tanya Humphreys tanyahumphreys5@gmail.com 022 611 7099

Staying mentally well: This bugger takes its toll. We are all feeling anxious or stressed about this, it's normal. Don't be afraid to reach out for help. You can call or text 1737 to talk with a trained counsellor for free, 24 hours a day, 7 days a week.

COVID-19 Healthline: 0800 358 5453
Healthline: 0800 611 116
Health advice about babies or children:
Plunket Line: 0800 933 922; Family Services: 0800 211 211
Work and Income: 0800 559 009
Alcohol Drug Helpline: 0800 787 797
Rural Support Trust: 0800 787 254
Business support: South Island 0800 505 096

OTHER USEFUL CONTACTS

Kurow Medical Centre: 03 436 0760 or Mackenzie Health Centre Twizel: 03 976 0503 kurowmedicalcentre.org.nz
Twizel Medical Centre: 03 435 0777 www.twizelmed.co.nz
Mackenzie Pharmacy: 03 435 0883 mackenziepharmacy.co.nz
Four Square Omarama: omarama@foursquare-si.co.nz

FOR WELFARE SUPPORT

Our Waitaki Community Connectors

These people are available to help with non-health-related welfare matters.

Mafa Alaloto mafa@oamarupacific.nz 021 107 8163 8.30 to 1pm

Oamaru Pacific Island Community Group Inc

Lauao Havili lauao@oamarupacific.nz 027 213 8939 1pm to 5pm

Oamaru Pacific Island Community Group Inc

A dedicated 0800 COVID-19 welfare support helpline (0800 512 337) is also available to those who need to self-isolate.

Help for businesses

<https://www.mbie.govt.nz/about/open-government-and-official-information/coronavirus-covid-19/>

Free business helpline: 0800 505 096



Updated guide to self-isolation



You will need to self-isolate from others if you:

are positive for COVID-19

live with a positive case

You must isolate at home or in suitable alternative accommodation. If you test positive for COVID-19, a health professional will help you decide if managed isolation is suitable for you.

Isolate for 10 days from when you test positive

Isolate for 10 days

No further tests required unless directed to

Tests on Day 3 and Day 10

Financial support may be available - check our website to find out what you may be eligible for: [Covid19.govt.nz/financial-support/](https://www.Covid19.govt.nz/financial-support/)

This information is accurate as at 24 February 2022. However, it may be updated if phases of the Omicron response change. For the most up to date information, please visit our website at www.Covid19.govt.nz

Te Kāwanatanga o Aotearoa
New Zealand Government

**Unite
against
COVID-19**

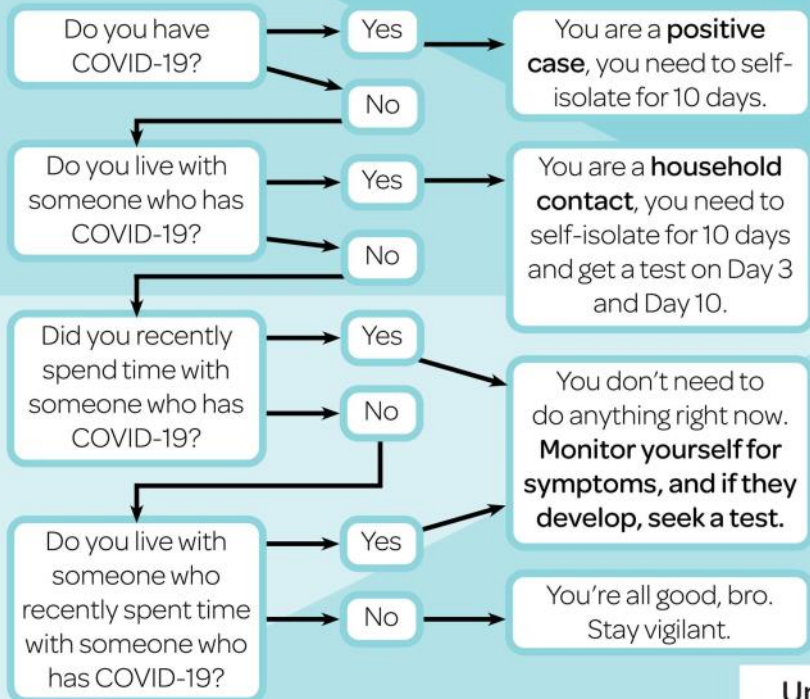
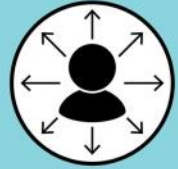
NOTE: Because Facebook is unreliable and some people do not run a social media account, all important or urgent messages will be emailed to you, posted on the noticeboard and/or posted as flyers in your mailbox.

To make certain you are on the list to receive these local notices email omaramagazette@gmail.com and put 'local list' in the subject box. We'll do our level best to get the messages to you.

The volunteers involved in the development of our community plan include Omarama Police, FENZ Omarama, Otago Rural Support Trust, Omarama Resident's Association and Omarama business representatives.

Outside agencies - emergency services, medical practices, health and welfare will be able to 'feed into' this plan.

What type of contact are you?



Te Kāwanatanga o Aotearoa
New Zealand Government

**Unite
against
COVID-19**

So you've had a positive Covid-19 test result - what happens next?

If you take a PCR test and return a positive result for COVID-19, you will be notified of your result by text message from the official 2328 number.

If you take a rapid antigen test (RAT), you will have your result in person at the time. If you did this yourself at home, you should upload the positive result to your My COVID Record page. If you cannot do this, you can call 0800 222 478 for assistance. Once you have done this, you will receive a text message from the official 2328 number.

This text will include a link to a data free online form that you will need to fill out. Read more here:

<https://www.health.govt.nz/covid-19-novel-coronavirus/covid-19-health-advice-public/advice-people-covid-19>

How to use a Rapid Antigen Test

3 March 2022

Test instructions vary depending on the brand. Many rapid antigen testing kits generally follow the instructions below, but not all. Please follow the manufacturer's instructions.

Collecting a sample



Remove a nasal swab from the pouch.



Insert the swab into one of your nostrils up to 2-3cm from the edge of the nostril.



Slowly roll the swab 5 times over the surface of the nostril. Using the same swab, repeat this collection process in the other nostril.



Check the kit box instructions to confirm the correct time frame to read your result. This may vary depending on the kit.

Testing the sample



Peel off aluminium foil seal from the top of the extraction vial, which contains the extraction buffer.



Place the swab into the extraction vial. Rotate the swab vigorously at least 5 times.



Remove the swab by rotating the swab against the vial, while squeezing the sides to release the liquid from the swab.



Close the vial with the provided cap and push firmly onto the vial. Mix thoroughly by flicking the bottom of the tube.



Turn vial upside down and hold sample over sample well. Squeeze vial gently. Allow the required drops according to the kit instructions, to fall into the sample well.



Please check on the kit instructions and follow the confirmed time to check for your test result.

Reading your result

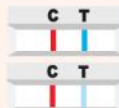
Negative

One line next to the C indicates the test is negative.



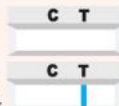
Positive

Two lines, one next to C and one next to T (even faint lines) indicate the test is positive.



Invalid Result

No line next to C indicates the test is invalid. With an invalid result you should retest. Follow manufacturer guidelines on how long to wait.



Reporting your result

You need to report your result. This can be done on My Covid Record.

Log into mycovidrecord.health.nz or call 0800 222 478 and press option 3.

If you are in the Close Contact Exemption Scheme, you should advise your employer of your result.





TWIZEL MEDICAL CENTRE

Community Owned, Community Focussed,
Community Operated

Twizel Medical Centre is your local Ministry of Health funded, enrolling practice. Contracted by SCDHB for General Practice, District Nursing and 24/7 Urgent Care, contracted by St John for PRIME (Primary Emergency Response) Services across the greater MacKenzie area.

Hours: Monday to Friday 08:30 - 5:00 pm with extended hours over the summer months

Urgent and emergency care 24/7

Our Team: NP Gemma, GPs Drs Peter and George, Admin/Receptionists Donna, Jacqui, Annie and Sue, Nurses Paula, Ann, Zoe, Holly and District Nurses Libby and Jess are passionate about our community accessing a high quality service.

Twizel Medical Centre has charitable status so any surpluses are reinvested to ensure our community has access to sustainable general and urgent care services.

15 MacKenzie Drive, Phone: (03) 4350777

The Directory

**For advertising rates
and guidelines**

phone
021 294 8002
or email
omaramagazette@gmail.com



Big Sky
Bed & Breakfast

Kay & Hank Verheul
10 Ahuriri Drive, Omarama, New Zealand

Phone +64 3 438 9538
Mobile 027 489 5149

Email kay@bigskybnb.co.nz
www.bigskybnb.co.nz

 **Coralie Reid**
ONE AGENCY
THE PROPERTY SPECIALISTS

021 919 089
coralie.reid@oatps.nz



Licensed REAA 2008

www.coraliereid.nz



For all your hydraulic requirements

Sales, service, design,
hose fittings & spare parts
97 Racecourse Rd, Washdyke.
Phone 03 688 2902
www.scarlett-hydraulics.co.nz



SOLE SMITH
HOME SERVICES

Home services, Gardening & lawn maintenance
Omarama - Twizel - Otematata - Kurow
Katrina Sole 022 020 8098 Heather Smith 027 330 0249
Email: solesmith2021@gmail.com

STREETS AHEAD OF THE REST

 **A20**
ELECTRICAL

*Servicing all your electrical needs
big or small we've got it covered*

We are now a service agent for a variety of
household and commercial whiteware appliances

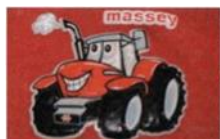
Phone: 022 189 3250
Email: rob@a2oelectrical.com

Omarama Storage



- Secure Lockup Storage
- 3.6m h x 3m w entry
- Short & Long term

Don't let the weather deteriorate your caravan, boat or motorhome over winter. Spaces available now.
Contact Bridget – bridgesp@xtra.co.nz
or Ph /txt 021572798



David O'Neill Contracting Ltd Omarama

Home 03 438 9883
Cell 027 433 5523 Fax 03 438 9891
davidoneillcontracting@xtra.co.nz

Big Sky
MOTEL
Your Hosts Kay & Hank Verheul

52 Ahuriri Drive Omarama
03 4389 538
bigsky.kiwi.nz



**ENROLMENTS
NOW OPEN**

Twizel Kindergarten



You get 30 free hours if your child is 3 or 4 years old like me.

The teachers are all qualified and registered.



There are spaces here for children aged 2-5 years.

We are a not for profit organisation and registered charity which means all the money received goes back to support your child's learning.



Contact Head Teacher Carol Sinclair

Phone 03 435 0433

or call in to the kindergarten

135 Mackenzie Drive, Twizel



FOR ALL YOUR EXCAVATING NEEDS

We have a 5.7 tonne excavator, an 8 tonne tip-truck and 1.7 tonne digger with augers for dry hire.

- Excavation
- Earthmoving
- Sitework
- Demolition
- Collection of debris
- Screened topsoil and Builders mix available

Phil Honeywill : 027 465 8372

honeywillphil@gmail.com

T & J Golder Ltd



Operating locally, specialists in agricultural chemical application and for all your small digger requirements

Call: Travis 021 710 305, Jo 027 458 4828 Email: travis.joanne@extra.co.nz

**Fishing • Camping • Gardening • Gifts
Cycling • Games • Toys • Homeware**

Just up the road in Twizel!

A bit of
everything.



Jake's
HARDWARE

www.jakes.co.nz

03 435 0881



rockgas™
Mackenzie

One stop shop for Gas. Locals Supplying Locals
45kg gas bottles regularly delivered

Otematata-weekly

Omarama - weekly

Twizel and Tekapo -2x weekly

Kuwro - fortnightly

Oamaru- daily Mon-Fri

And all areas in between.

Down load the App

Ph 0800 433 4574

Order online - Rockgas.co.nz or www.hiflo.co.nz

Need Gas installed check out www.hiflo.co.nz or phone 03 433 0011 or info@hiflo.co.nz we have an experienced team in Oamaru and Twizel.



Karan MacDiarmid

With more than 9 years Real Estate experience and an amazing team supporting her, Karan is the obvious choice for all your real estate needs.

Call now for more information about how Karan can help you.

0275 177 959
karanm.twizel@ljh.co.nz



Closed Mondays and Tuesdays

**Open: Wednesday to Saturday 8.30am to late
Sunday 8.30am to 3pm**

(Closed statutory holidays)

Phone: Tanya 027 673 1381





Tall Poppy™

Covering the Waitaki Valley with over three decades in the Real Estate industry in the Waitaki, Central Otago, and Mackenzie Country.

Based in Omarama, with the Tall Poppy offer of **fair flat fees** and our **free marketing package**.

It's no wonder Tall Poppy is New Zealand's fastest growing (organically) Real Estate Company.

Thinking of selling?
Let's talk

Gary Sutherland
AREINZ

027 432 661

gary.sutherland@tallpoppy.co.nz





THE DIFFERENCE BETWEEN ORDINARY & THE EXTRA ORDINARY - LAING'S PRE-FAB ESCAPE RANGE

Our well-appointed pre-fab Escape range of 2, 3 & 4 bedroom homes are built by registered master builders. They are built off-site and delivered on piles with the flexibility for plan customisations to suit how you'll enjoy your new home or holiday home with family and friends.

If you're looking to simply walk into a magnificent home all complete, leave it up to us. Turn-key packages can include; site services, driveways, fencing, decks, landscaping and more.

You can now build a holiday home at a cost that works for you; 2 bedroom 87m² Escape priced from \$260,000 GST inclusive. To download a plan brochure visit laing.co.nz/transportables today.

Contact our Sales Consultants today on 03 349 4977 or simply email us on info@laing.co.nz



Showhome
Open weekdays 9am - 5pm or by appointment
15 Hanworth Avenue,
Sockburn, Christchurch

www.laing.co.nz

Laing

Public Notice - Meridian Energy

ŌHAU RIVER – Planned Maintenance of sediment basin.

As part of our ongoing maintenance programme of the Upper Ōhau hydro sites, we will be undertaking maintenance work on the sediment basin, near where the Ōhau River enters Lake Ruataniwha. Works will commence on 21 February 2022 and will be completed by 8 May 2022.

The area of land around the work areas will be closed to the public for this period.

For public safety, please follow all signage and keep out of the area whilst the works are in progress.

Non-powered watercraft will also be excluded from this section of the Ōhau River during this time.

The works will not restrict any boating activity on Lake Ruataniwha.

We apologise for any inconvenience.



**The weather that was
@ 44°29'30.1"S 169°58'20.3"E**

February 2022

Highest temperature: February 15, 28.4C

Lowest temperature: February 28, 29 C

Most rainfall: February 4, 70.6 mm

Total rainfall for February: 136.4mm

Public Notice - LINZ

LAKE BENMORE WEED SPRAYING

Aerial and boat based aquatic weed spraying is scheduled to be carried out at Lake Benmore from Tuesday, 1st March and may be carried out intermittently until Friday, 29th April. This will exclude weekends and public holidays.

The following sites may be targeted for treatment:

*Ahuriri Delta and Arm

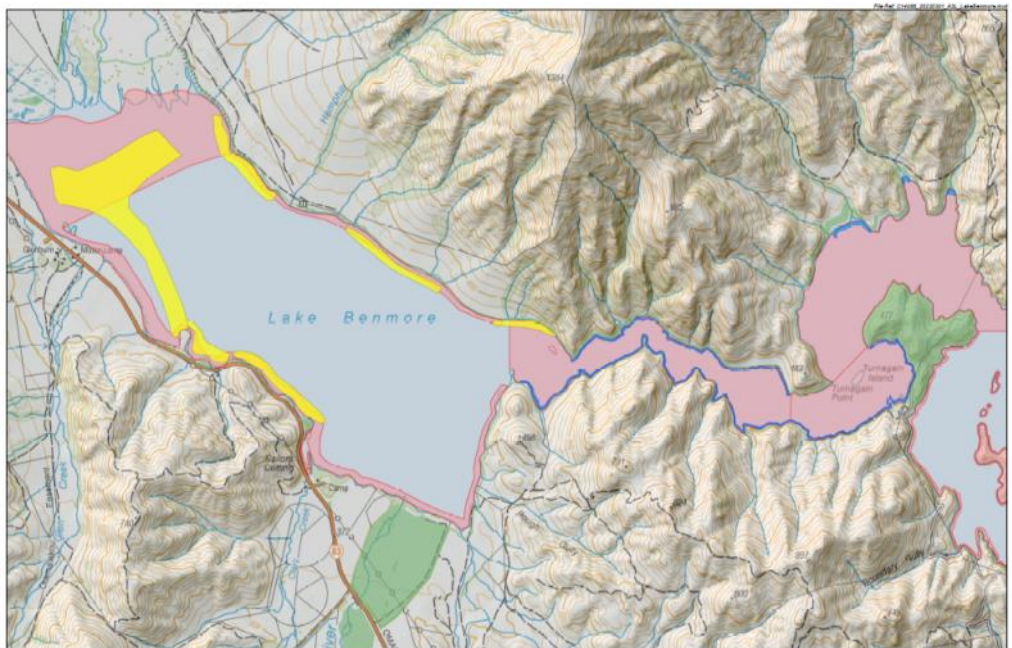
*The Neck

Diquat in gel form will be used to treat aquatic weeds. This work is dependent on suitable weed, water and weather conditions and therefore the timing is subject to change.

Advertisements have been placed in the Timaru Herald and The Press to notify the public of this operation.

We recommend a 24 hour stand-down on swimming, fishing or taking water for irrigation or domestic supply once the spraying is complete.

If you have any questions in relation to this work, please feel free to call us on 0800 638 943 or keep up to date with treatment progress nearer to the time on the LINZ website.



The Last Page is Classifieds

BREEN CONSTRUCTION

Building since 1939 - available for your all of your construction projects in the Upper Waitaki and Mackenzie districts. Contact our Area Manager Jason Pryde on 021 340 694 or email jason.pryde@breen.co.nz
www.breen.co.nz

TRUCK AND TRAILER LOADS

of firewood logs.

Larch/Corsican pine mix

\$1750 per load includes delivery to Omarama.

2 loads available. Call Andy 029 526 6673

WARMING UP WINTER

Get your winter wood order in and win with Hot Tubs Omarama.

Order your winter wood now and every metre ordered goes into the draw to win a Hot Tub and platter for two at Hot Tubs Omarama. The more you order the more chances you have to win. Orders must be in before March 13 to enter.

You do not need to receive or pay for your wood to enter, just simply put in your order with email, phone number and delivery address and desired delivery date.

Delivery date must be before April 17 and winner will be drawn once all the wood for this competition has been delivered.

Hot mix - blend of larch and pine \$100pm

emma@hottubsomarama.co.nz 027 635 5664

The Ōmārama Gazette

Ōmārama's news delivered to your inbox

the first Wednesday of each month

To subscribe email:

omaramagazette@gmail.com

Copyright © 2016 -2019 Omarama Gazette, All rights reserved.